

# HENDRIX



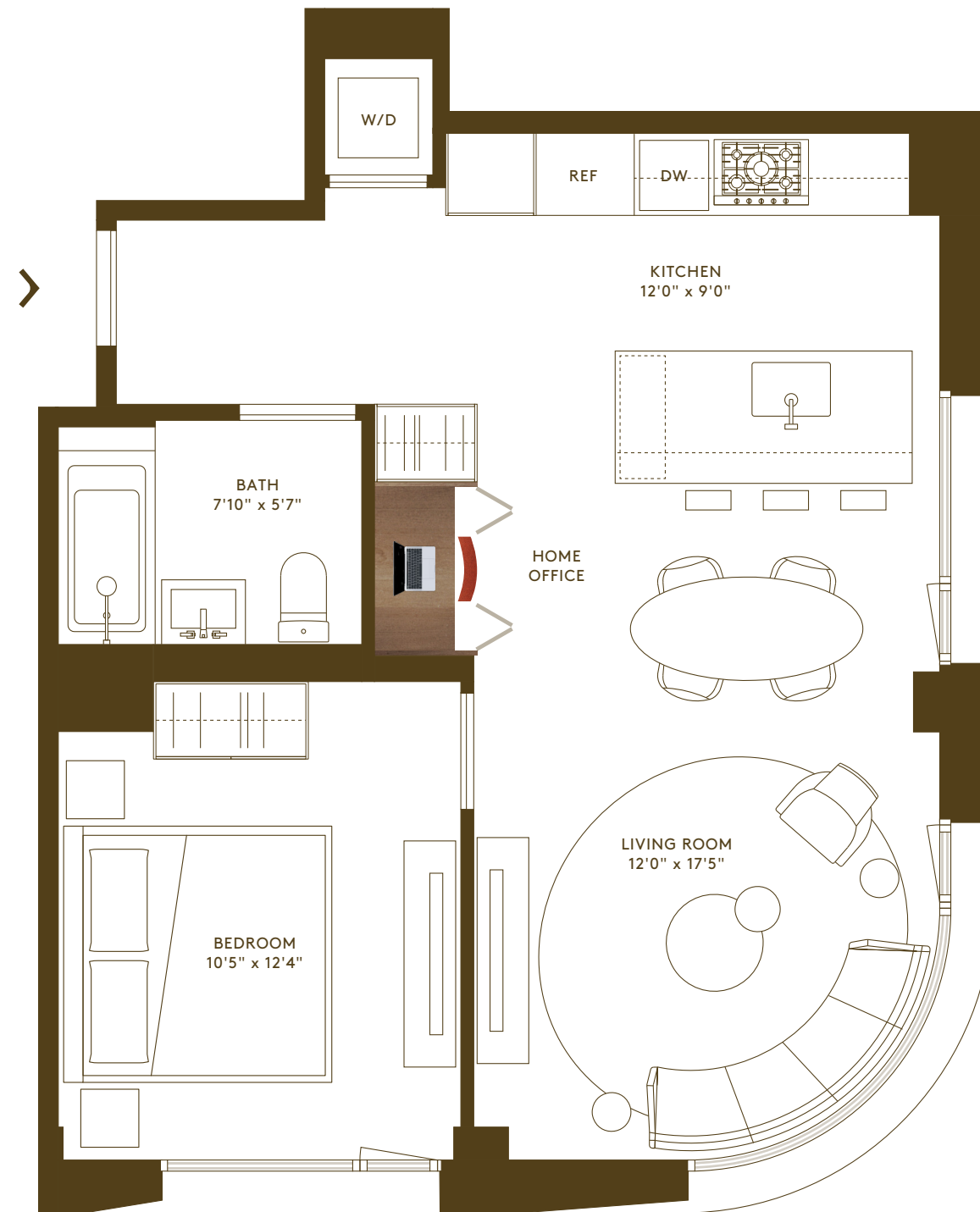
## HOUSE

3D, 5D, 7D, 9D

1 BEDROOM

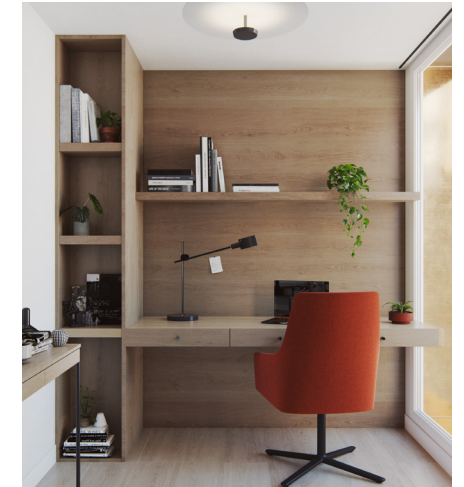
1 BATHROOM

INTERIOR 660 SF / 61 SQ M



### HOME OFFICE

Every residence includes a dedicated custom-designed Home Office with precision millwork, shelving system and desk with soft close drawers and seamless grommets for cord management.



### RESIDENCES

- Curved Corner Windows with 270-Degree Views in Select Homes
- Private Outdoor Space in Select Homes
- 8-Inch-Wide Plank European Oak Engineered Flooring
- 4-Inch Squared Recessed Lighting
- In-Unit Bosch Washer and Dryer
- Smart Apartment Entry Lock
- Central Heating and Cooling with Individual Room Thermostat

### BUILDING

- Over 6,000-Square-Feet of Amenities Space
- Resident's Lounge with Catering Kitchen
- Landscaped Courtyard
- Co-Working Center with Double-Height Ceiling
- Wellness Spa with Steam Room and Sauna
- Fitness Center with Technogym Equipment
- Pet Spa with Grooming Station
- Landscaped Rooftop with Multiple Lounging and Dining Areas, Fireplace, Fully-Equipped Kitchen



25TH STREET

2ND AVENUE



929.855.2250 | SALES@HENDRIXHOUSENYC.COM  
250 E25 STREET NEW YORK NY 10010  
HENDRIXHOUSENYC.COM