

# HENDRIX



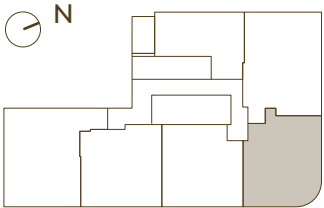
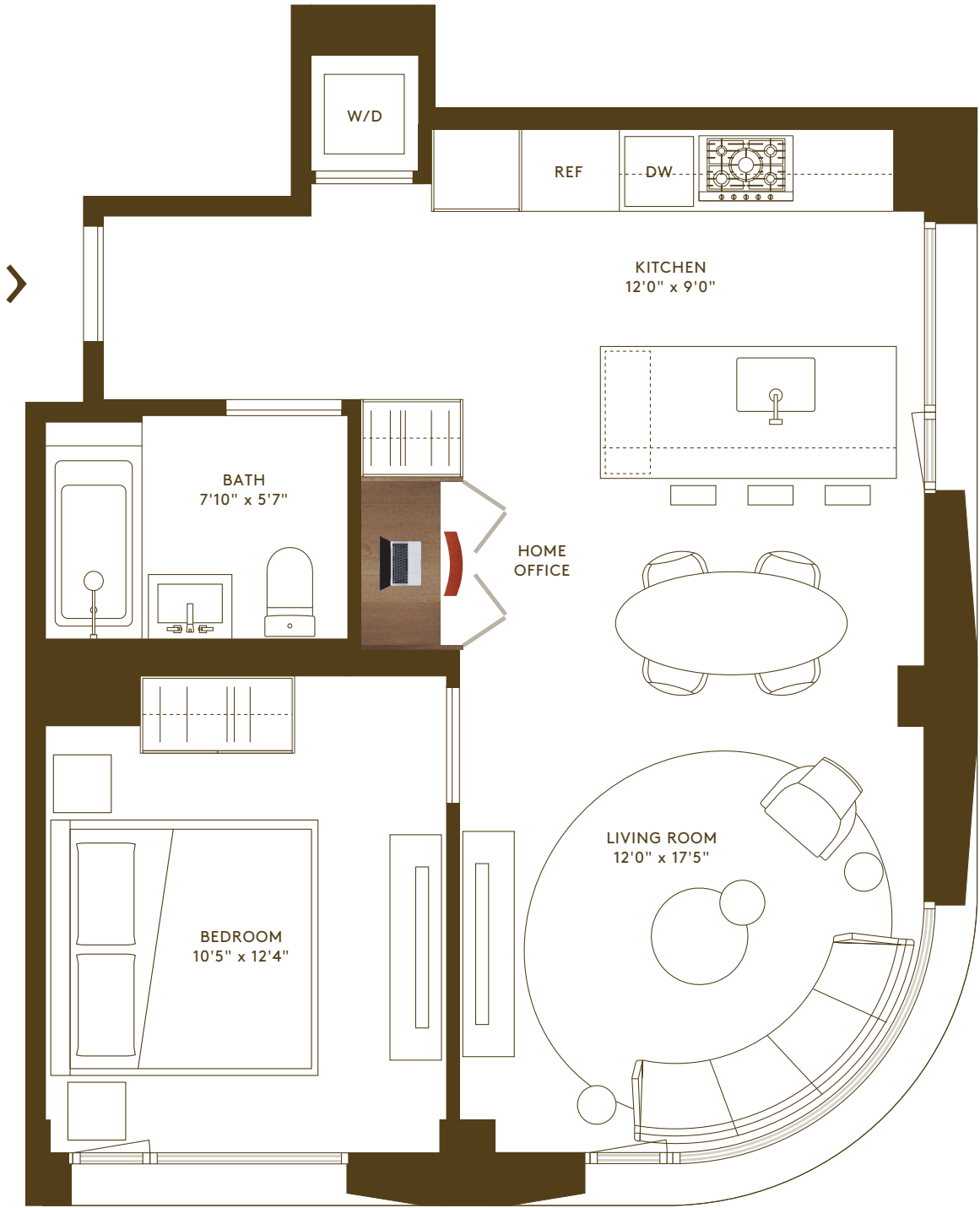
HOUSE

4D, 6D, 8D, 10D

1 BEDROOM

1 BATHROOM

INTERIOR 660 SF / 61 SQ M



2ND AVENUE

25TH STREET



## HOME OFFICE

Every residence includes a dedicated custom-designed Home Office with precision millwork, shelving system and desk with soft close drawers and seamless grommets for cord management.



## RESIDENCES

Curved Corner Windows with 270-Degree Views in Select Homes

Private Outdoor Space in Select Homes

8-Inch-Wide Plank European Oak Engineered Flooring

4-Inch Squared Recessed Lighting

In-Unit Bosch Washer and Dryer

Smart Apartment Entry Lock

Central Heating and Cooling with Individual Room Thermostat

## BUILDING

Over 8,000-Square-Feet of Amenities Space

Resident's Lounge with Catering Kitchen

Landscaped Courtyard

Co-Working Center with Double-Height Ceiling

Wellness Spa with Steam Room and Sauna

Fitness Center with Technogym Equipment

Pet Spa with Grooming Station

Landscaped Rooftop with Multiple Lounging and Dining Areas, Fireplace, Fully-Equipped Kitchen

XXX.XXX.XXXX | INFO@HENDRIXHOUSENYC.COM  
250 E25 STREET NEW YORK NY 10010  
HENDRIXHOUSENYC.COM